

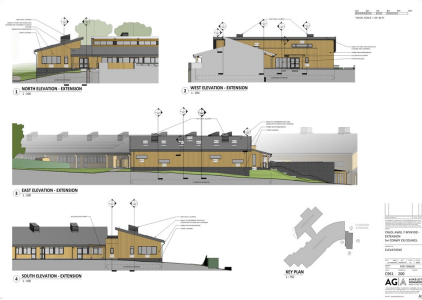
# Case Study



## Ysgol Arwel y Mynydd, Llandudno Junction

gareth morris  
construction limited

### PROJECT DESCRIPTION



The project briefly comprises the construction of two new classrooms with associated toilet facilities and the addition of an office in the nursery classroom including additional car parking.

Steel Frame Construction

<b>CONTRACT START</b>	Jan 2021
<b>CONTRACT DURATION</b>	35 Weeks
<b>CLIENT</b>	Conwy County Council (CCC)
<b>CLIENT ADMIN</b>	Conwy County Council (CCC)
<b>PRINCIPAL DESIGNER</b>	Gareth Morris Construction
<b>CONTRACT TYPE</b>	JCT intermediate 2011
<b>COST</b>	£575,540
<b>PROJECT TYPE</b>	New Build Project

### THE OBJECTIVE

The project will help bring opportunities to more pupils, from early years to develop their Welsh language skills.

GMC were appointed as Principal Contractor to deliver this project at Ysgol Awel y Mynydd for our client Conwy County Council procured under the North Wales Construction Partnership framework.

The Project was to be delivered to the highest of quality standards, within the contract period and to budget with zero defects at handover.

The project was registered with the Considerate Contractors Scheme.



## THE OUTCOMES



**gmc**

gareth morris  
construction limited

This project was delivered during the height of the COVID-19 Pandemic which restricted our ability to enter outside agencies such as community groups, job centres, schools and colleges and for individuals not absolutely necessary for the works to attend site.

This project fulfills the Welsh Governments commitment to providing 30 hours of government-funded early education and childcare for up to 48 weeks of the year to all three and four year olds of eligible working parents.

Facilities across North Wales have also benefited from over £24.8m investment in capital projects as a result of the offer, Ysgol Awel Y Mynydd being one of them.

The extension of the new classrooms matched the KS2 classrooms built a few years previous with minor alterations in the nurse classrooms to facilitate the private play group.

The project was delivered to programme, with zero defects at the end of the period and with zero reportable incidents.

The project was able to deliver 100% of the North Wales Construction Framework Community benefits commitments.